

BA PROVINCIAL FREEBIRD INSTITUTE
YEAR 12 ANNUAL EXAMINATION 2020

COMPUTER STUDIES

Time Allowed: 3 Hours
(An extra 10 minutes is allowed for reading this paper.)

INSTRUCTIONS

1. Write your **Index Number** on the front page of the **Answer Booklet**.
2. Write **all** your answers in the **Answer Booklet** provided.
3. If you use extra sheets of paper, be sure to show clearly the question number(s) being answered and tie each sheet in your **Answer Booklet** at the appropriate places. Ensure that your **Index Number** is written on the extra sheets.
4. Answer **all** the questions with a blue or black ballpoint pen or ink pen. Do **not** use red ink pen. You may use a pencil **only** for drawing.
5. You may use a calculator, provided it is silent, battery-operated and non-programmable.
6. There are **three** sections in this paper. **Sections A and B are compulsory. Note the options in Section C.**

SUMMARY OF QUESTIONS

SECTION	QUESTION TYPE	MARK	SUGGESTED TIME
A	There are twenty multiple choice questions. All the questions are compulsory.	20	36 minutes
B	There are six short answer questions. All the questions are compulsory.	60	108 minutes
C	There are four essay questions. Answer any one question.	20	36 minutes
TOTAL		100	180 minutes

4. Which one of the following is the negative impact of proprietary software?
- A. Well documented.
 - B. Issues with customization.
 - C. Support is organised and provided by the vendor.
 - D. Single product that is verified and works with all components of application.
5. A program that comes into a computer system masked as something else is
- A. Viruses.
 - B. Zombies.
 - C. Web Bugs.
 - D. Trojan Horses.
6. Which of the following is a **negative** impact of computerization of society?
- A. New jobs and job efficiency.
 - B. Increase in quality of products.
 - C. Exposure to unwanted activities.
 - D. Overall increase in quality of living.
7. The process of converting readable data into unreadable form is called
- A. encryption.
 - B. decryption.
 - C. copyright.
 - D. copy protection.
8. Another name given to **e-waste** is
- A. t-waste.
 - B. Techno trash.
 - C. electronic trash.
 - D. technology trash.
9. What is the key difference between Bluetooth, Wi-Fi and WiMax channels which forms wireless communication?
- A. Cost.
 - B. Distance.
 - C. Size.
 - D. Technology.
10. Which of the following is considered a line of sight communication medium?
- A. Infrared.
 - B. Bluetooth.
 - C. Broadcast radio.
 - D. Satellite communication.

Turn Over

QUESTION 2

COMPUTERS IN SOCIETY

(10 marks)

- (a) Define **information society**. (1 mark)
- (b) State **one** way in which computers can be protected from viruses. (1 mark)
- (c) There are other hazards to computer systems and data besides criminals. Identify **one** of these hazards. (1 mark)
- (d) Study the report given below and answer the questions that follow.

All Service Computer Company has a total of 100 workers and 70 computers. After monitoring the monthly evaluation report for the past 5 months, the project manager has found that some employees are using computers and internet facilities for personal use.

- (i) Suggest **one** measure that could prevent the employees from abusing computer and internet facilities. (1 mark)
- (ii) Explain an important role of a project manager. (1 mark)
- (e) Use the diagrams given below to answer the questions that follow.



Diagram A

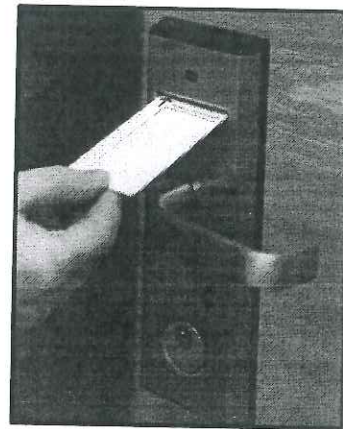


Diagram B

Source: Google Image Search

- (i) Which **principal measure** is used in both the diagrams above to secure computing resources? (1 mark)
- (ii) Name the security measure used in Diagram A and Diagram B. (1 mark)
- (iii) State the **difference** between the security measures used in **Diagram A** and **Diagram B**. (2 marks)
- (iv) Identify **one building** where these security measures are mostly used. (1 mark)

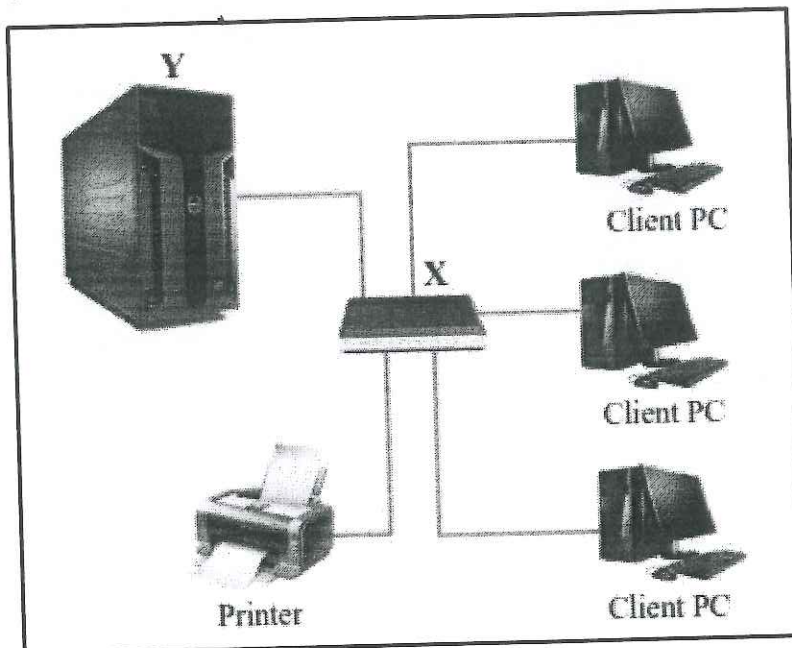
Turn Over

QUESTION 3 **COMMUNICATION AND NETWORKS** **(10 marks)**

- (a) Modems are used to convert signals from analog to digital and vice versa. Explain **one** reason why signals need to be converted. **(2 marks)**
- (b) The standard protocol for the internet is TCP/IP (transmission control protocol/Internet protocol). Explain the **process** carried out by the **TCP layer**. **(2 marks)**
- (c) State the function of **DNS**. **(1 mark)**
- (d) Explain how data is transmitted in a **half-duplex** channel using diagram. **(2 marks)**
- (e) Differentiate between **LAN** and **WAN** in relation to connectivity range. **(2 marks)**
- (f) State **one** advantage of computers connected to a network. **(1 mark)**

QUESTION 4 **COMMUNICATION AND NETWORKS** **(10 marks)**
VISUAL BASIC.NET PROGRAMMING

- (a) Use the diagrams given below to answer the questions that follow.



Source: FY12CE 2016 Paper

- (i) Name the network topology model used in the diagram. **(1 mark)**
- (ii) Identify the devices labelled X and Y. **(2 marks)**
- (iii) Describe how the resources in the network is shared. **(2 marks)**

- (b) The Principal of Savu College has hired you as a computer programmer to develop a program that will help the staff to analyse examination results and provide feedback on students' performance.

Draw a flowchart that will enable the staff to do the following:

- Enter the name of the student;
- Use **for...next** statement to enter marks for five subjects (marks out of 100);
- Calculate the total marks;
- Use **IfThenElse** structure to determine the grade of the student;
- Display Student Name, Total Marks, and Grade for each student.

Use the table below as the grading criteria.

Total Mark	Grade
340 – 400	A
270 – 339	B
200 – 269	C
0 – 199	D

(5 marks)

QUESTION 5

VISUAL BASIC.NET PROGRAMMING

(10 marks)

- (a) When a programmer starts executing a program, the first step is called compiling. Define **clean compile**? (1 mark)
- (b) Study the VB.Net programming code for **btnDisplay** and answer the questions below.

```
Private Sub btnDisplay_Click(ByVal sender As System.Object, ByVal e As
System.EventArgs) Handles btnDisplay.Click
    Dim num As Integer
    For num = 0 To 2
        lblShow.Text = lblShow.Text & vbNewLine & "Year 12"
    Next
End Sub
```

- (i) Identify **one** variable used in the program. (1 mark)
- (ii) What will be the output of the program when **btnDisplay** is clicked? (2 marks)