

RATU NAVULA COLLEGE
YEAR 12 TRIAL EXAMINATION 2020

ENGLISH

Time Allowed: 3 Hours
(An extra 10 minutes to be given for reading)

INSTRUCTIONS

1. Write all your answers in the Answer Book provided.
2. Write your name on the front page of the Answer Book.
3. If you need more paper, ask the supervisor for extra sheets. Attach these inside the Answer Book at the appropriate place.
4. There are four sections in this paper. Sections A, B and C are compulsory. Note the choices in Section D.

SUMMARY OF QUESTIONS

Section	Guidelines	Total Mark	Suggested Time
A	Writing Question 1- Formal Writing Question 2- Personal Writing <u>Both questions are compulsory.</u>	25	55 minutes
B	<u>Comprehension and Summary Writing</u> Question 3- Comprehension Question 4- Summary Writing <u>Both questions are compulsory</u>	20	45 minutes
C	<u>Language</u> Part I- Grammar and Vocabulary This question is compulsory	15	10 minutes
	Part II- Register study There are four questions. <u>Answer any two</u> questions.	10	15 minutes
D	<u>Literature</u> There are three genres in this section. Answer <u>any two</u> questions, one each from two different genres.	30	55 minutes
Total		100	180 minutes

SECTION A WRITING [25 marks]

There are two questions in this section. Both the questions are compulsory.

QUESTION 1 FORMAL WRITING (15 marks)

Write on one of the Expository Essay topics given or attempt Report Writing for this section. Write about 230 to 250 words.

In marking, the examiner will be looking especially for the use of an appropriate register, originality of ideas, logical organization, correct paragraphing, relevant linkages, expression and style.

Expository Essay

- Either (a) Values to be instilled at Home
- Or (b) Reviving the Tourism Industry During the Post-Covid 19
- (c) Effects of Social Media on Students
- Or (d) Nature is a gift for life

Report

- Or (e) Write a report titled; Adult Literacy Rate in the Pacific.
Use the table given below, write a report entitled: School Dropouts in Fiji.
You may use the following headings:

- Introduction
- Analysis for the six year period
- Recommendations
- Conclusion

Table 2.7 Progress of the 1988 Form 3 Cohort for 5 Years

Year	Class	Roll					Total
		Fijian	Indo-Fijian	Others	Male	Female	
1996	Form 3	7,399	8,262	787	7,909	8,539	16,448
1997	Form 4	6,906	7,539	636	7,222	7,859	15,081
1998	Form 5	5,811	5,922	666	5,937	6,462	12,399
1999	Form 6	5,733	6,012	586	5,697	6,612	12,309
2000	Form 7	1,247	2,604	250	1,915	2,146	4,061

Source: Education Commission Report, 2000.

SECTION A (continued)

QUESTION 2

PERSONAL WRITING

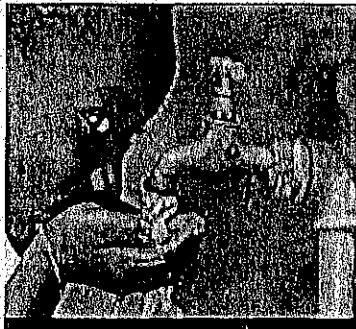
(10 marks)

The theme of this question is "Water Safety".

Write about 200 words on one of the topics (a)-(d) given below. Each requires writing in a particular register for a particular audience.

If you choose option (a) use the following name and address; Apisai Bale(boys) or Tehana Simon (girls) of 52 Nairai road, Raiwai.

- Either (a) As a concerned citizen write a Letter to the Editor raising your concern on the increasing number of drowning cases recently in Fiji.
- Or (b) Write a narrative essay and include this sentence: The old lady looked up to me and sincerely said, "Thank you for saving my grandson."
- Or (c) Write a conversation between two friends based on the topic, Swimming classes To be Made Compulsory in Schools.
- Or (d) Using the photographs given below, write about the theme in any style of your choice from Personal writing. (Do not write Expository Essay or Report Writing).



SECTION B COMPREHENSION AND SUMMARY WRITING

(20 Marks)

There are two questions in this section. Both the questions are compulsory.

QUESTION 3 COMPREHENSION

(15 marks)

Read the passage carefully and answer the questions that follow.

HUNTING, FISHING AND GATHERING

For the greatest part of its time on earth, the human population survived solely through the activity patterns of hunting, fishing and gathering. Until the Neolithic period, there was little acknowledge of agriculture not much need to practice it. Existence entailed a dependence on fruits, nuts, roots, and other wild plant foods, whereas hunting and fishing increased the portion of protein in the diet.

The extent to which meat or fish formed a portion of the diet obviously varied between communities and regions. Eskimo groups, for example, lived almost entirely on meat, some still do, although the numbers that do are declining. Natives of the Northwest Pacific Coast built their diet and culture around fishing. Still, other groups, found in southern Africa or in Amazonia, live almost entirely on plants or roots; animal protein is not part of their food intake. Most likely, the tendency among the prehistoric hunting communities was to gorge on meat when it was available and to go without until another kill was made.

By the standards of civilized humanity, hunting, fishing and gathering peoples have traditionally been regarded as primitive. Their way of life and their mode of economy have usually been placed at the bottom of the pyramid of progress. The old Stone Age hunters may have lived only for 40 years because of an inability to care for the sick or severely injured, but their diet was on the whole balanced and nutritious. Only with the advance of the farmer, the growth of industrial cities, and the advent of sport and commercial fishing and hunting has the fair available to the practitioners of the oldest way of life tended to diminish - and these survivors have been pushed into the most inhospitable areas of the globe.

By the beginning of the Christian era, only about half the world's population existed by hunting, fishing and gathering. By AD1500, perhaps no more than 1 percent of the globe's population was sustained by life-styles within this broad pattern of activity. Today, only a handful of groups scattered in marginally habitable areas survive. And their days are numbered.

In recent decades some of these relic peoples have been studied extensively by anthropologists. The discovery of the Tasaday people in the dense forests of Philippines in 1971 has afforded an opportunity to peer through time at a prehistoric pattern of life. The gentle Tasaday gatherers seemingly have survived unchanged from the old Stone Age!

Among other groups that have aroused interest are the Bushmen of southern Africa. Their way of life in the Kalahari, although lacking in modern comfort, seems not to be wanting in many essentials. Their diet is balanced, they have a goodly amount of leisure time after they have gathered their provisions, and the quality of their community life is high. Above all, their foraging existence seems surprisingly secure.

Adapted from: Introduction to Human Geography

SECTION B (continued)

QUESTIONS

A. Multiple Choices

(4 marks)

Choose the most appropriate answer. Write the **letter** of the answer you choose in your Answer Book.

1. Which two elements were used by early humans to increase protein?
 A) fruits and nuts C) nuts and roots
 B) roots and wild plant food D) hunting and fishing

2. The word **gorge** (line 11) as used in the passage means _____.
 A) a gluttonous meal C) a small canyon
 B) to swallow greedily D) the throat

3. What was the average lifespan of Old Stone Age hunters?
 A) About 40 C) More than 40
 B) Less than 40 D) 71

4. Farming and other human activities have led to _____.
 A) old Stone Age hunters flee their land C) inhospitality
 B) more sports, fishing and hunting D) an unbalanced diet

B. COMPLETION

(6 marks)

Complete the following sentences using the ideas given in the passage. Try to use your own words where possible.

5. Prior to the Neolithic period, there was _____
 _____ (2marks)
6. While the natives of Northwest Pacific Coast gave importance
 _____ (2marks)
7. By the start of the Christian era, _____
 _____ (2marks)

C. OPEN-ENDED

(5 marks)

Use your own words as far as possible to answer the questions given below. Write complete sentences.

8. How does the diet of the Eskimos differ from the diet of the inhabitants of the Northwest Pacific Coast? (1mark)
9. Why did the old Stone Age people have a shorter life span? (1mark)
10. What happened in Philippines in 1971? (1mark)
11. How does the life of the Kalahari dwellers differ from the rest of the relic people? (2marks)

QUESTION 4

SUMMARY

(5 marks)

(Spend about 15 minutes on this Question.)

Summarize paragraphs 3 - 6 of the passage in about 90 - 100 words.

SECTION C: LANGUAGE

(25 Marks)

There are two questions in this section. Both the questions are compulsory.

QUESTION 5 GRAMMAR AND VOCABULARY

(15 marks)

A. Parts of Speech

(4 marks)

Identify the parts of speech in bold print in the following sentences and write your answer in the Answer Book provided.

1. **Sisilia** is the only girl in her family.
2. These are the books that I was referring to.
3. **Who** is man with the blue shirt?
4. We drove **down** the beach after lunch.

B. Confused Pairs

(4 marks)

Choose the correct word from the pair given in brackets to fill in the blank spaces in the sentences below by writing the correct word in the Answer Book.

1. The young boy was awarded for _____ so brave. (been/being)
2. "Teaching is a _____. One must have the calling for it." The principal told the teachers during a meeting. (vocation/vacation)
3. We are _____ to make mistakes when we are tired. (liable/libel)
4. The _____ tone of the orator's speech caused the crowd to get sleepy. (monotone/monotonous)

C. Proof Reading

(4 marks)

Each of the following sentences has an error. Identify the error and beside it, write the correction. Do not write out the whole sentence.

1. Out of the two girls, **Siteri** is good in singing.
2. The little girl has shared her birthday cake between her class.
3. "Who's bag is the black one?" Jone asked.
4. Take my advise. Don't do it.

D. Rewriting

(3 marks)

Rewrite each of the following sentences according to the instructions given in brackets and ensure that the meanings do not change.

1. I slept well last night. (Change to past perfect tense)
2. The weather was cold so we didn't go to the beach. (Begin: Hadn't.....)
3. If you don't listen, you won't come for the party. (use: unless)

Part 11

REGISTER STUDY

(10 marks)

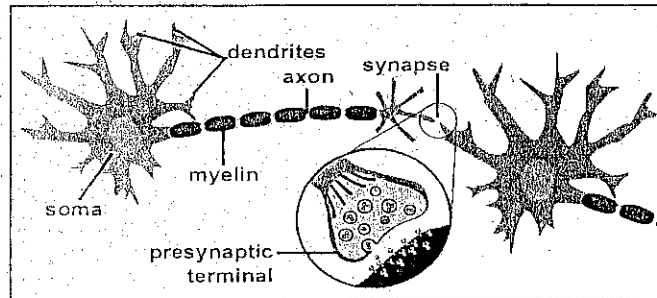
Study the samples given in Questions 6 to Question 9 and answer any two in your Answer Book.

QUESTION 6 LANGUAGE OF SCIENCE

(5 marks)

Neuron Structure

Most neurons are made up of the following parts: the **nucleus** (which contains the genetic instructions), the **soma** (or cell body), **dendrites** (branch-like structures which receive information from other neurons), **axons** (long tubular pathways which send information to other parts of the brain), and an (axonal) **presynaptic terminal**. The presynaptic terminal connects to other neurons via **synapses**. Many axons are surrounded by **myelin**, essentially sheaths which help axons quickly send signals over long distances.



Cartoon diagram of a neuron and one of its synapses. The soma is the cell body of the neuron, where genetic information is stored in the nucleus (orange). Dendrites emit from the soma and receive electrical and chemical signals from other neurons. The long projection is called an axon, which is wrapped in a protective myelin coating. The synapse is the point where two neurons meet. In the presynaptic terminal (highlighted in the magnified area), chemical messengers travel from the axon to the receiving dendrite of the next neuron.

Questions

1. State the purpose of this sample. (1 mark)
2. What is the most likely source of this sample? (1 mark)
3. Give an example of a passive voice used in the sample. (1 mark)
4. Identify a non-linguistic feature that is present in the sample and comment on its importance. (2 marks)

QUESTION 7 LANGUAGE OF NEWSPAPER REPORTING

(5 marks)

Emosi's miracle

WANSHIKA KUMAR

Saturday, September 12, 2020.

Physical disability was not a reason for Emosi Diani to neglect his passion for singing.

Losing the ability to walk did have a tremendous impact on his life but Emosi still insisted on pursuing his deep longing to sing.

The 21 year old from Rewa said watching musical artists perform live on television motivated him to walk and launch his first album 'Senibua Koula'

"I envisioned this when I was young. I grew up watching musicians perform on television and I kept pushing myself to stand upright, exercising my leg until and eventually I began to walk."

"While watching artists perform, I always said in my heart that one day I will stand on the stage and now I managed to release my first album last month."

He said listening to music played a special part in his life and he couldn't spend a single day without listening to it.

For many people, smartphones are a distraction, but for Emosi it was his tool to succeed.

"The challenge I faced was when I composed songs. I could not write with a pen, so I used my phone to type."

Mr Diani is relieved that the launch of his first album.

Source: Fiji Times

QUESTIONS

1. What is the purpose of the above extract? (1 mark)
2. Identify and give an example of a linguistic feature found in this extract. (1 mark)
3. What is the first paragraph known as? Comment on the importance of this paragraph. (2 marks)
4. Comment on the layout of the sample. (1 mark)

QUESTION 8 LANGUAGE OF PUBLIC ADMINISTRATION (5 marks)

MORTGAGEE SALE
ADVERTISEMENT

Written offers are invited for the purchase of freehold property of Roshni Devi Kumar comprised of Certificate of Title No. 24958 being described as Lot 2 on DP 5724, Vishnu Deo Road, Nakasi Nausori.

Erected on site is a single storey corrugated iron residential building consisting of 2 separate flats.

Accommodation & amenities offered for flat 1 & flat 2 comprises in common 2 bedrooms, a lounge and dining area, kitchen equipped with a single bowl stainless steel sink, overhead and floor cupboards and drawers with tiled top workbenches, ablution area consisting a separate water closet unit and shower area, external laundry area fitted with a double bowl concrete wash tub.

The property consisting of a basic quality accommodation; internally it offers basic appointments and layout. The property is in a good location with all amenities and services readily available.

For further information, please contact Mohammed Faiyaz on 3213 130 on weekdays Mon - Fri. 8.30am - 4.30pm.

All tenders received will be VAT Exclusive. Tenders including telephone number in sealed envelopes marked "Private and Confidential" should be sent to the undersigned no later than 5.00pm on 18th August, 2017.

Tenders should be accompanied by a deposit of \$200.00 (Bank cheque) payable to ANZ Banking Group Limited which will be refunded to unsuccessful tenderers only. The highest or any tender will not necessarily be accepted.

Ref: Roshni Devi Kumar

THE TEAM LEADER
BUSINESS RECOVERIES UNIT
P O BOX 646
SUVA

QUESTIONS

- Who is the target audience? (1 mark)
- Identify a verb in passive form. How does it help the tone of the sample? (2marks)
- Give an example of a standard expression used in this sample. (1mark)
- Identify a non-linguistic feature of this sample. (1mark)

QUESTION 9 LANGUAGE OF BUSINESS (5 marks)



POLY PRODUCTS (FIJI) LTD

Viria Rd., Vatuwaqa Industrial Estate, Suva, Fiji Islands
P.O.Box 5171, Ralwaqa, Suva, Fiji. Phone: (679) 3385544 Fax: (679)3370052
E-mail: pshusil@polyproducts.com.fj

QUOTATION NUMBER : PS 1282

Rinas Electrical
Tavua

10th March 2016

Supply of Light Fittings for USP 110 Hall

Item	Description	Qty	Unit Price	Total VIP
1	PDL Batten holder with Philips 12W CFL lamp	1	\$ 17.50	\$ 17.50
2	Philips 1200mm Emergency batten with Philips 36W Tube. LED tube not compatible with LED	1	\$ 270.00	\$ 270.00
3	Philips 2 x 1200mm Emergency batten with 1 x Philips LED lamp and 1 x Philips 36W flouro lamp	1	\$ 295.00	\$ 295.00
4	Philips 20W IP54 rated LED downlight	1	\$ 395.00	\$ 395.00
5	Philips LED exit Light	1	\$ 250.00	\$ 250.00
6	Philips 600mm batten with diffuser with LED tube	1	\$ 85.00	\$ 85.00
7	Philips 600mm batten with diffuser with LED tube and reflector	1	\$ 80.00	\$ 80.00
8	Philips 1200mm LED weatherproof batten	1	\$ 185.00	\$ 185.00
Total VIP Lights				\$ 1,577.50

- Prices are VIP.
- Prices are valid for 30 days.
- Prices may change due to change in duty, VAT, Freight & Exchange Rate
- 50% Deposit upon ordering and 50% upon delivery
- Prices are based on quantities taken from lighting layout provided
- Prices are based on no retentions.
- Warranty of 3 years on all light fixtures
- Delivery is 8-10 weeks from receipt of order with 50% deposit

Pranit Shusil
Technical Engineer

QUESTIONS

- Comment on the tone of the sample? (1 mark)
- Quote two commercialese used in the sample? (1 mark)
- Identify a non-linguistic features used. Comment on the usage. (2marks)
- State the purpose of the use of dates in the above sample. (1 mark)

OR

(D) Any Two Short Stories

Select two short stories based on the theme "Relationship" and for each,

- (ii) explain an important message. (6 marks)
- (iii) discuss how the above message helps one to become a better person. (4marks)

OR

(E)

Select two short stories based on the theme "Values" and for each

- i. discuss the central idea in the story. (5marks)
- ii. explain how the idea mentioned above is applicable to your society. (5mark)

QUESTION 11**POETRY****(15 marks)**

With reference to the poems chosen, answer any one of the options (A) to (D) in your Answer Book.

EITHER:

Possibilities*"Poets normally write poems to portray messages to readers."*Choose two poems from Possibilities on the theme "Progress or Social Issues" and for each,

- (i) discuss two lessons you learnt from the poems. (5 marks)
- (ii) explain how suitable the lessons discussed above are to you as an Year 12 student. (5 marks)

OR **(B) Possibilities***"Poets use various techniques of writing to impart messages "*Select two poems from Possibilities on the theme "Progress or Social Issues" and for each,

- (i) choose any two poems and discuss a stylistic device used. (4marks)
- (ii) discuss how the style used above brings out a message in the poem. (6marks)

OR **(C) Possibilities**Select two poems from Possibilities on the theme "Progress or Social Issues" and for each,

- (i) describe an issue in the poems studied. (5 marks)
- (ii) explain how relevant is the above issue to your society. (5 marks)

SECTION D**LITERATURE****[30 Marks]**

Answer two questions, one each from any two of the following genres: POETRY, PROSE and DRAMA. Use about 200 words for each of your two answers. Write the genre chosen, the question number, the letter of the option chosen, the title(s) of the work(s) chosen and the name(s) of the author(s)/playwright/poets. All questions answered must make close reference to the texts. Each essay answer is worth 15 marks.

QUESTION 10**PROSE****(15 marks)**

With reference to the novel or two short stories that you have studied, answer any one of the options (A) – (E) in your Answer Book.

EITHER

(A) Any Two Short Stories*"Most authors choose characters in such a way that they impart lessons"*Choose two short stories from Other Worlds on the theme "Relationship" and for each,

- (i) choose a character each from the two stories studied and discuss their characteristics. (4 marks)
- (ii) discuss a lesson young people can learn from these characters. (6 marks)

OR

(B) Any Two Short Stories*"A setting and background is an important element of a story."*

Select two short stories based on the theme "Values" and for each,

- (i) describe the setting and background of the stories studied. (6 marks)
- (ii) discuss the effectiveness of these setting and background to the stories. (4 marks)

OR

(C) Novel:*"The foundation of the traditional customs was shaken by the intrusion of the new culture."*

With reference to the novel that you have studied,

- (i) discuss the truth of the above statement. (5 marks)
- (ii) select and comment on any two contrasting reactions to the new culture. (5 marks)

OR

(D) Any Two Short Stories

Select two short stories based on the theme "Relationship" and for each,

- (ii) explain an important message. (6 marks)
 (iii) discuss how the above message helps one to become a better person. (4marks)

OR

(E)

Select two short stories based on the theme "Values" and for each

- i. discuss the central idea in the story. (5marks)
 ii. explain how the idea mentioned above is applicable to your society. (5marks)

QUESTION 11**POETRY****(15 marks)**

With reference to the poems chosen, answer any one of the options (A) to (D) in your Answer Book.

EITHER:

Possibilities*"Poets normally write poems to portray messages to readers."*Choose two poems from Possibilities on the theme "Progress or Social Issues" and for each,

- (i) discuss two lessons you learnt from the poems. (5 marks)
 (ii) explain how suitable the lessons discussed above are to you as an Year 12 student. (5 marks)

OR (B) Possibilities*"Poets use various techniques of writing to impart messages"*Select two poems from Possibilities on the theme "Progress or Social Issues" and for each,

- (i) choose any two poems and discuss a stylistic device used. (4marks)
 (ii) discuss how the style used above brings out a message in the poem. (6marks)

OR (C) PossibilitiesSelect two poems from Possibilities on the theme "Progress or Social Issues" and for each,

- (i) describe an issue in the poems studied. (5 marks)
 (ii) explain how relevant is the above issue to your society. (5 marks)

OR

(D) Reading a Poem

Read the poem given below and answer the questions that follow.

BE SPECIFIC

Don't say you saw a bird; you saw a swallow,
 Or a great horned owl, a hawk or oriole.

Don't just tell me that he flew;
 That's what any bird can do;
 Say he darted, circled, swooped, or lited in the blue.

Don't say the sky behind the bird was pretty;
 It was watermelon pink streaked through with gold;
 Gold bubbled like a fountain
 From a pepper-minted mountain
 And shone like Persian rugs when they are old.

Don't tell me that the air was sweet with fragrance;
 Say it smelled of minted grass and lilac bloom;
 Don't say your heart was swinging;
 Name the tune that it was singing,
 And how the moonlight's neon filled the room.

Don't say the evening creatures all were playing;
 Mention tree toad's twanging, screeching fiddle notes.
 Picture cricket's constant strumming
 To the mass mosquitoes humming
 While the frogs are singing bass deep in their throats.

Don't use a word that's good for all the senses
 There's a word for every feeling one can feel
 If you'd want your lines terrific;
 Then do make your words specific,
 For words can paint a picture that is real.

The messages brought by the senses
 Are among life's greatest recompenses.
 By Maurice Applegate

QUESTIONS

- (i) Identify an imagery each that relates to these two senses : sound and sight. (3 marks)
- (ii) What is the word blue in stanza 2 referring to? (2 marks)
- (iii) Identify a figure of speech from the poem and explain how it relates to the title of the poem. (3 marks)
- (iv) Discuss the meaning of the line in stanza 6, **Don't use a word that's good for all the senses.** (3 marks)
- (v) Discuss the subject and explain the theme of the poem. (4 marks)

QUESTION 12DRAMA**(15 marks)**

With reference to the play chosen, answer any one of the options (A) to (D) in your Answer Book.

EITHER(A) Julius Caesar by William Shakespeare

"The main characters in a play are people we admire or people we dislike."

Referring to the main character in a play you have studied,

- (i) describe an incident whereby he/she showed his/her qualities; (6 marks)
- (ii) discuss the central message you have learnt from this incident. (4 marks)

OR (B) Julius Caesar by William Shakespeare

With reference to any play you have studied,

- (i) describe the opening scene of this play. (4 marks)
- (ii) explain your reaction to that scene. (3 marks)
- (iii) discuss an issue the playwright is conveying to you through that scene. (3 marks)

OR(C) Julius Caesar by William Shakespeare

"Plays must be acted to be understood."

With reference to any play you have studied,

- (i) comment on the statement above. (5 marks)
- (ii) state two reasons why you would recommend this play to young people in your society. (5 marks)

OR (D) Julius Caesar by William Shakespeare

Read the excerpt given below and then answer the questions that follow.

Re-enter Lucius
Lucius. Searching the window for a flint, I found this paper, thus seal'd up;
 [Giving him a letter]
Brutus. Get you to bed again, it is not day.
 Is not tomorrow, boy, the ides of March?
Lucius. I know not, Sir. [Exit]
Brutus. [Opens the letter and reads]
 'Brutus, thou sleep'st awake and see thyself. Shall Rome. Speak, strike, redress!
 Such instigations have been often dropp'd, where I have took them up. Thus must I
 piece it out:
 Shall Rome stand under one man's awe?

QUESTIONS

- (i) Who is Lucius? (1 mark)
- (ii) What is the ides of March? (1 mark)
- (iii) Who is the letter originally from and what purpose the letter intends to serve? (3 marks)
- (iv) What effect did the letter have on Brutus? (2 marks)
- (v) How does the letter affect what happens in the rest of the play? (2 marks)
- (vi) Give details of at least three major happenings that take place after Brutus receives this letter with close reference to the text. (6 marks)

THE END